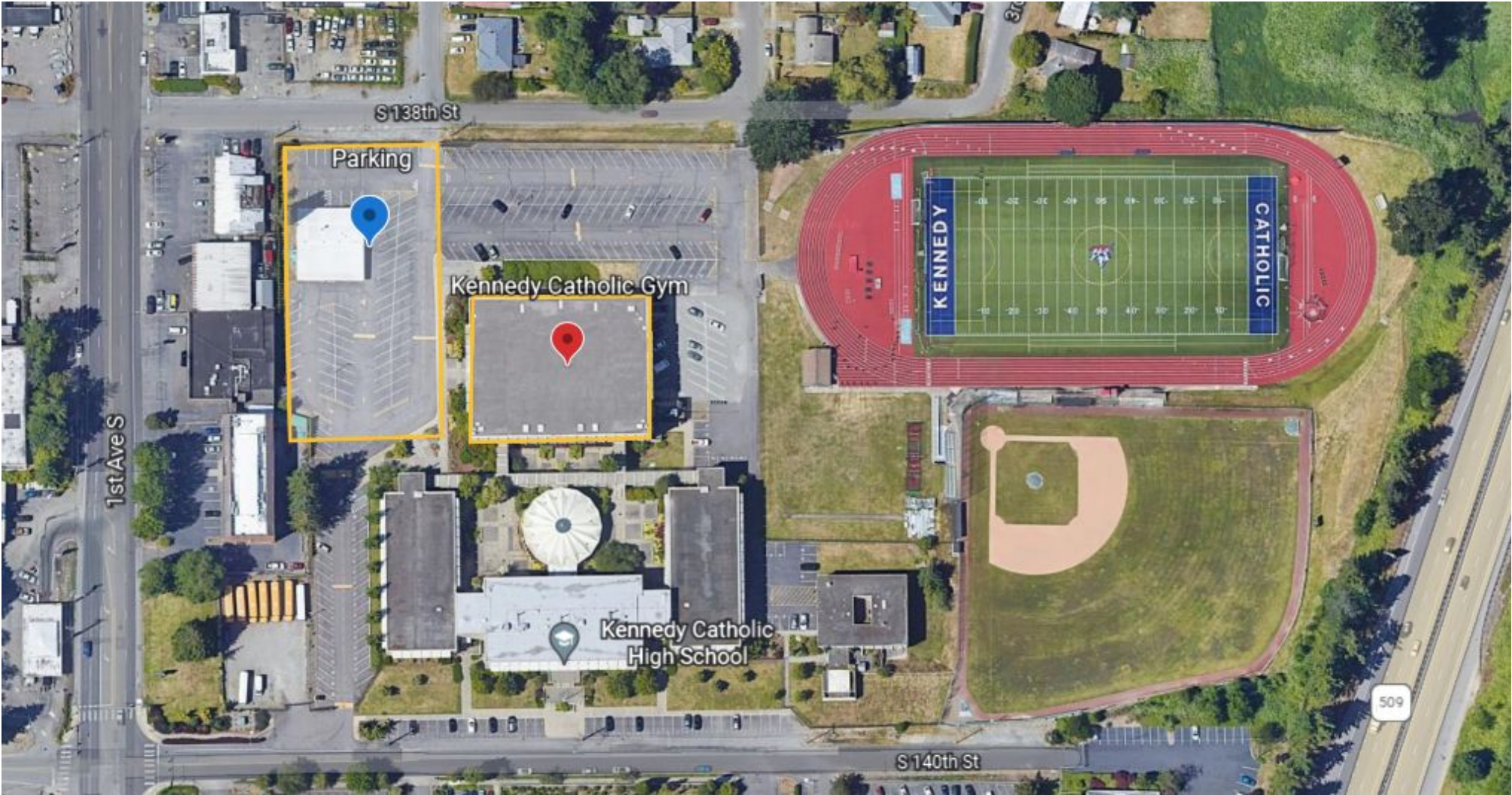


# KENNEDY CATHOLIC

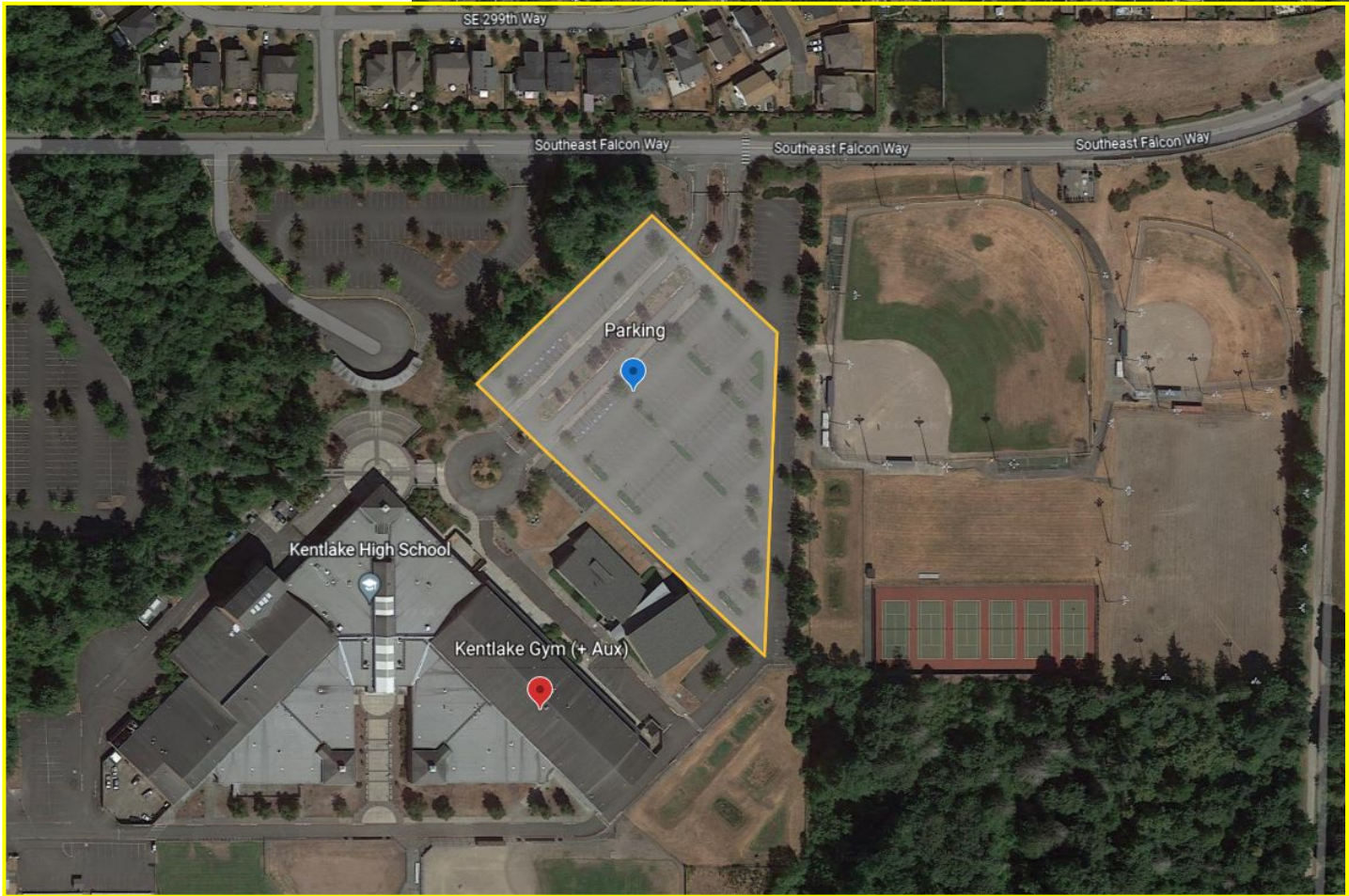
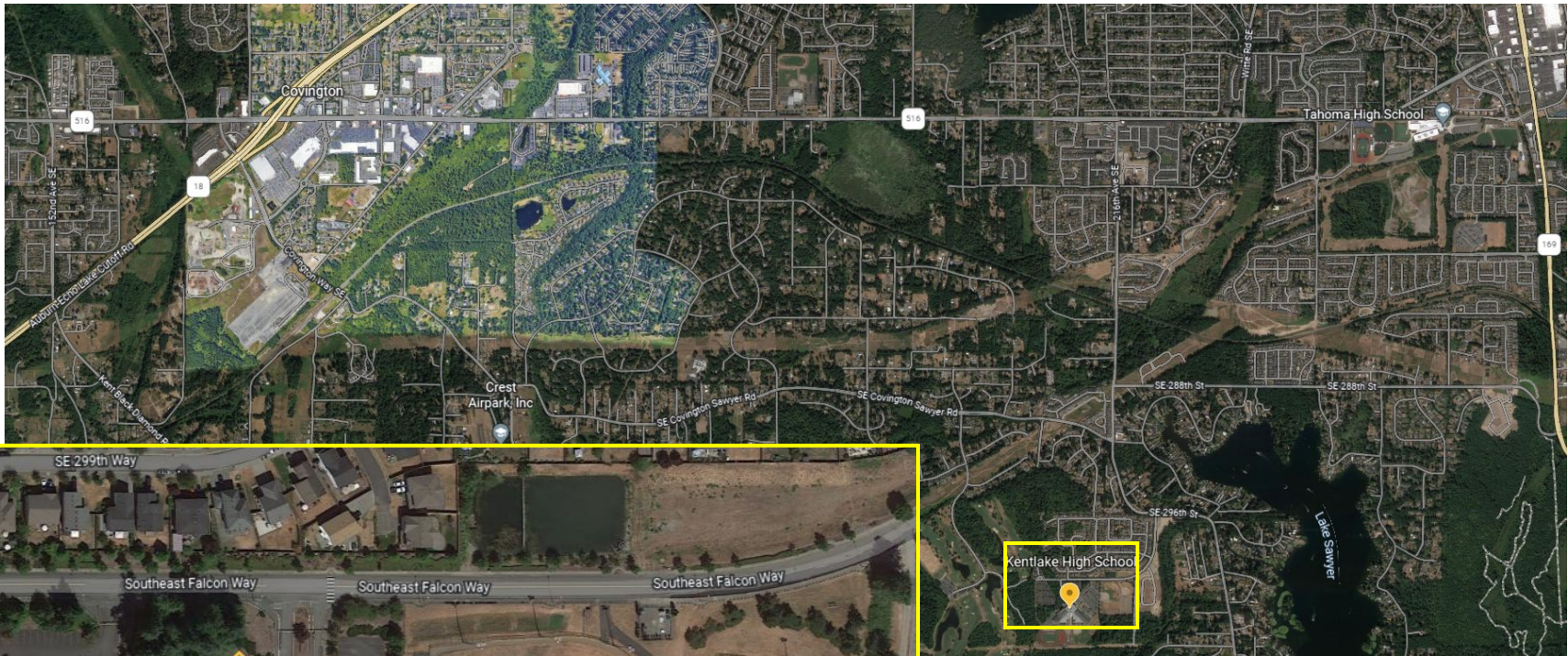
Enter from 138<sup>th</sup> or 140<sup>th</sup>. Gym entrance is on west side of building facing parking lot.





# KENTLAKE

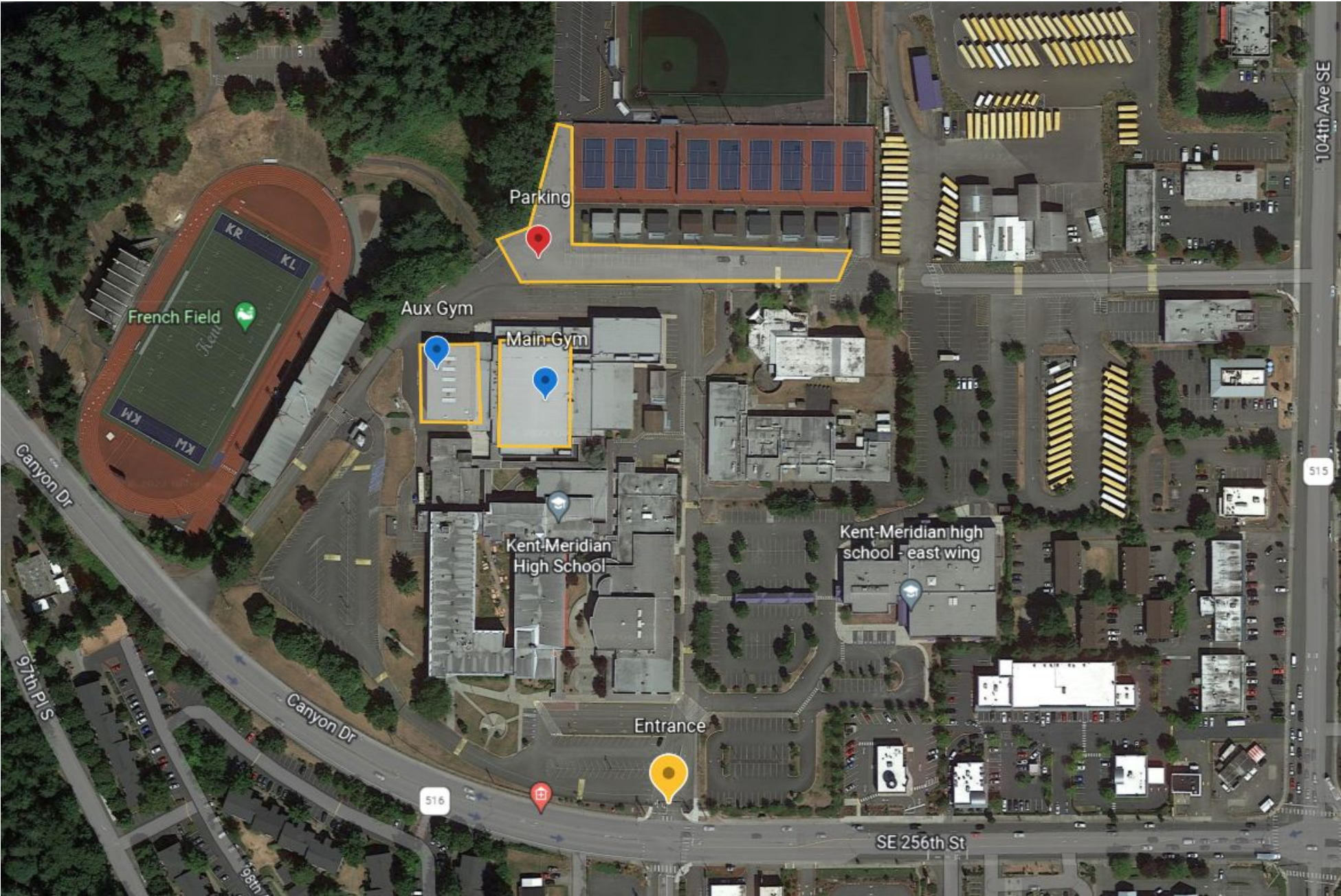
Parking is fairly straightforward.  
The gym is straight ahead – there  
is usually a gym door propped  
open to come in through rather  
than using the front doors.





# KENT MERIDIAN

Entrance is at a light – turn into the school and drive straight back to the portables to find parking behind the building. Gym entrance for both gyms is between the two from that back side.

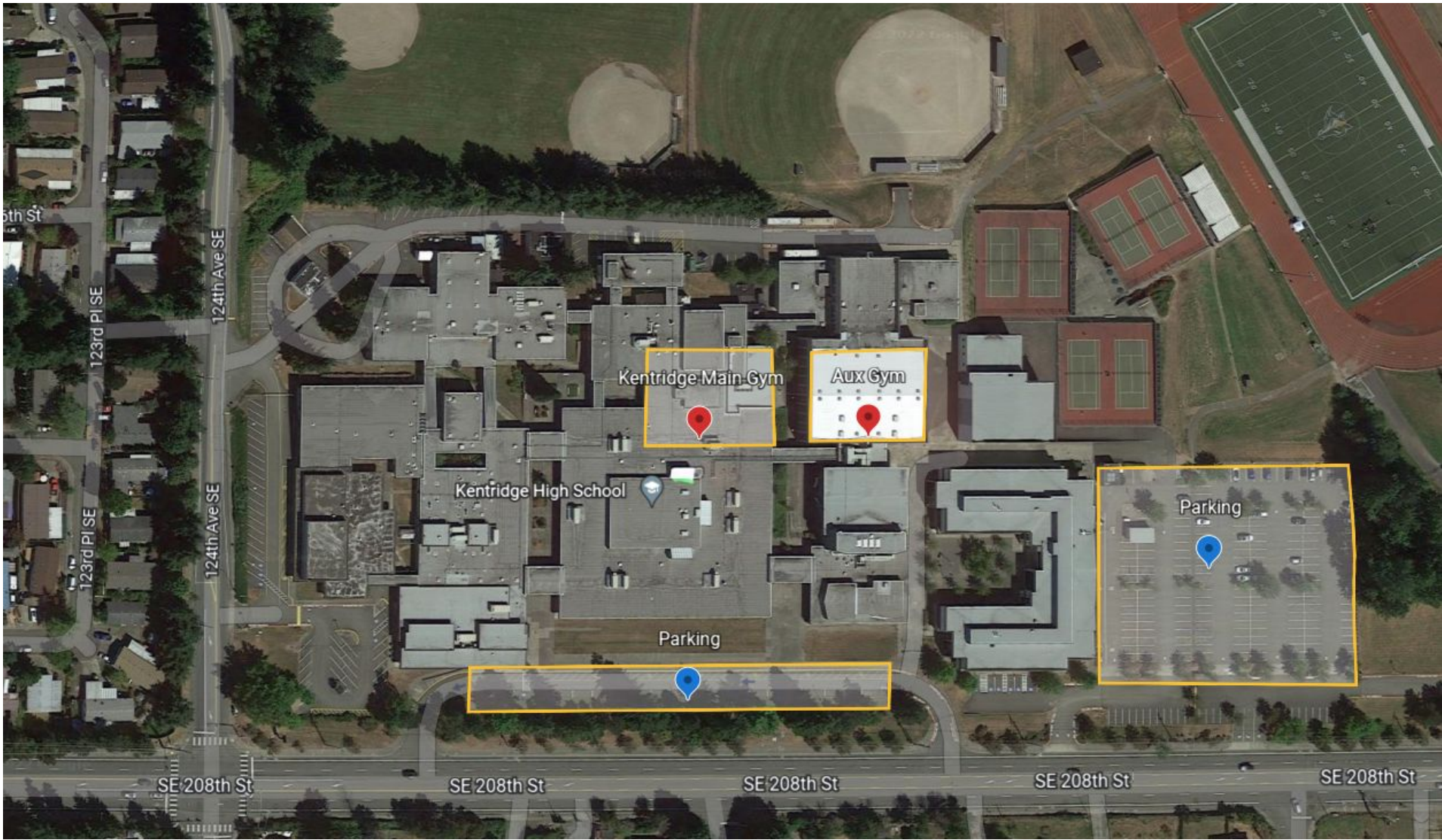




# KENTRIDGE

There is parking in front of the school in the small loop lot or just east of the school in a larger lot.

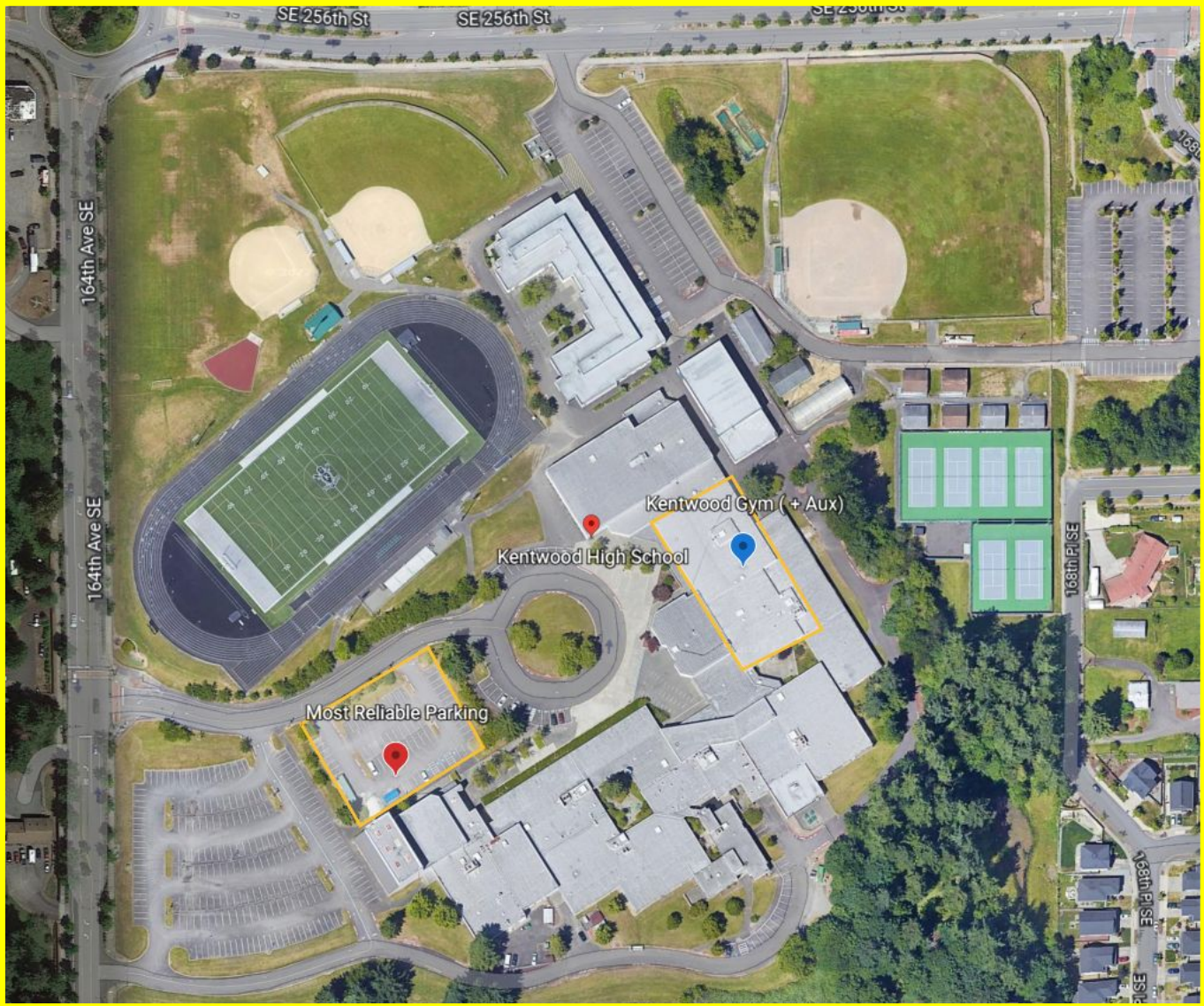
Main Gym entrance is in a courtyard in the middle of campus.





# KENTWOOD

Parking is sometimes available in roundabout with early arrival times.

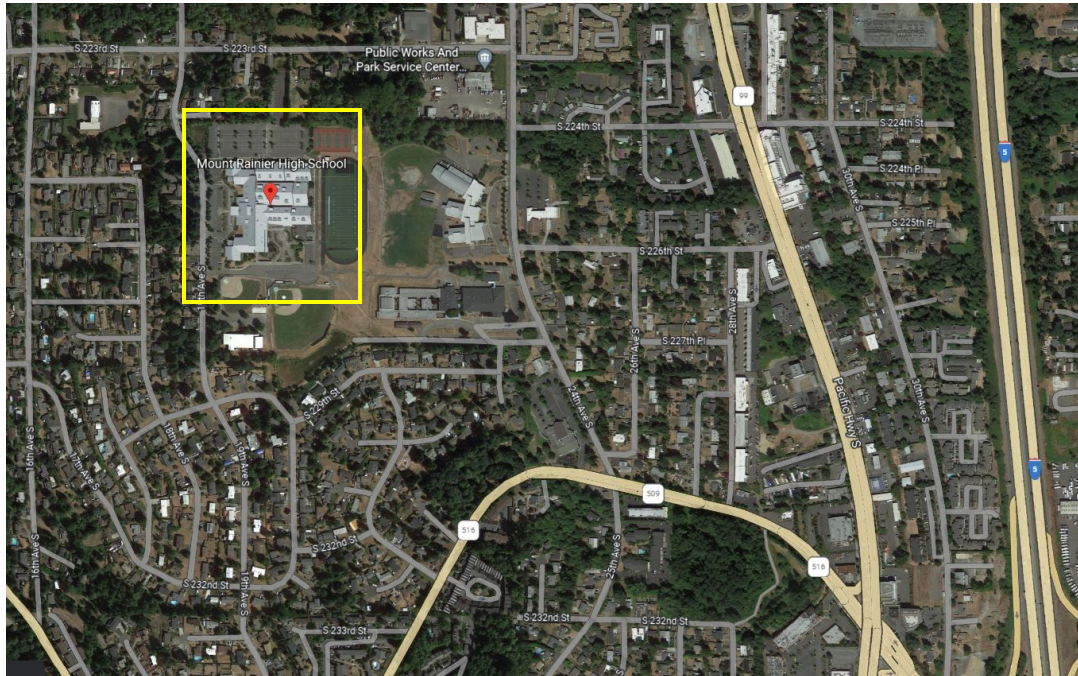




# MT RAINIER

Recommend parking in front of main entrance and taking hallways to gym (keep left and straight ahead).

Sometimes possible to come in side door by the auxiliary gym.





# TAHOMA

From Kent Kangley, turn left onto 228<sup>th</sup>, then go left at the roundabout.

